

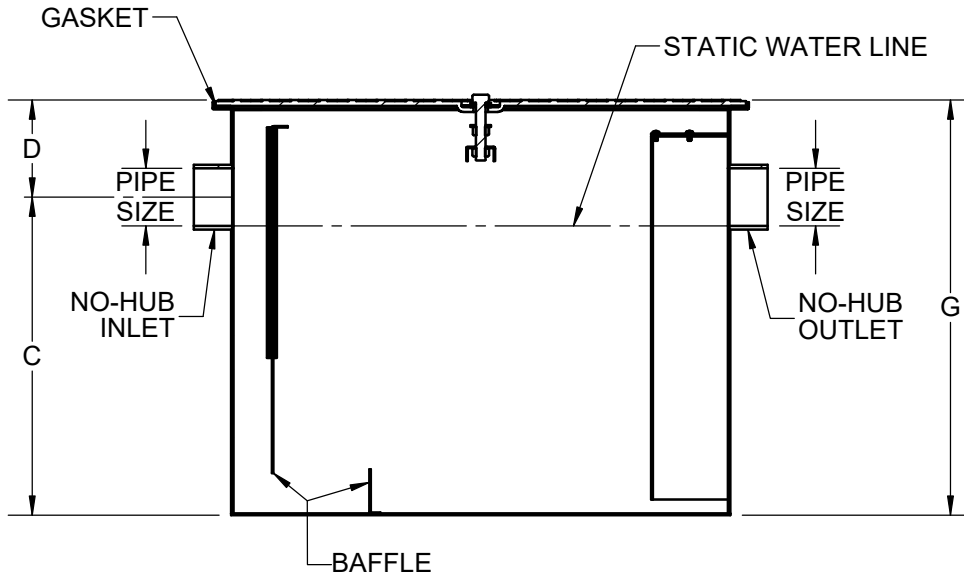
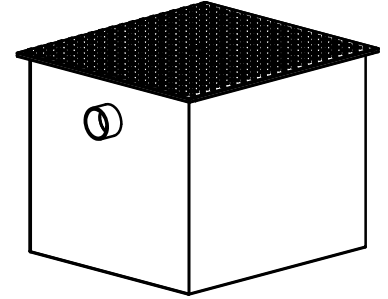
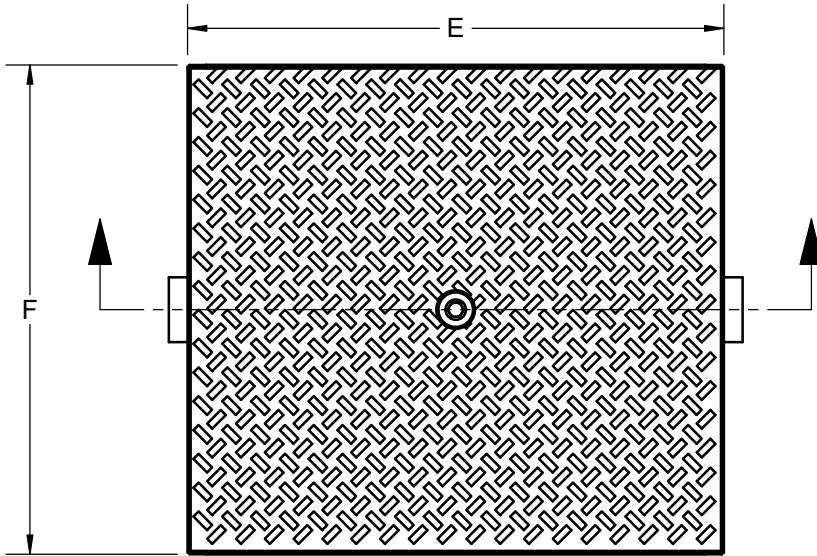
SPECIFICATION:

JOSAM JG-0100S-EXT SERIES ACID-RESISTING EPOXY COATED FABRICATED STEEL GREASE INTERCEPTOR, NO-HUB CONNECTIONS, INTERNAL TRAP, REMOVABLE BAFFLE, GASKETED NON-SKID COVER AND FLOW CONTROL FITTING. (& BOLT ON EXTENSION)

**GREASE INTERCEPTOR
MANUAL TYPE**

SERIES JG-0100S-EXT

CONFORMS TO PLUMBING AND DRAINAGE INSTITUTE STANDARD PDI-G101 AND ASME A112.43



PRODUCT IS NON-CANCELABLE AND NON-RETURNABLE

NAME: _____

SIGNATURE: _____

DATE: _____

	TYPE	FLOW (GPM)	CAP. (LBS.)	PIPE SIZE	C	D	E	F	G
	JG-0102S-EXT	7	14	2	8-1/4	9-3/8	14-7/8	13	17-5/8
	JG-0103S-EXT	10	20	2	8-1/2	9-3/8	16-5/8	14-1/2	17-7/8
	JG-0104S-EXT	15	30	2	9-1/2	9-3/8	20-3/8	17	18-7/8
	JG-0105S-EXT	20	40	3	12	10-7/8	20-7/8	19	22-7/8
	JG-0106S-EXT	25	50	3	13	10-7/8	23-3/8	21-1/2	23-3/8
	JG-0107S-EXT	35	70	3	14-1/2	10-7/8	26-1/8	23	25-3/8
	JG-0108S-EXT	50	100	3	16-1/2	10-7/8	27-7/8	25-1/2	27-3/8
	JG-0109S-EXT	75	150	3	21	12	41	31	33
	JG-0110S-EXT	100	200	4	23	14	47	35	37

WARNING: Cancer and Reproductive Harm - www.P65Warnings.ca.gov

DATE OF LAST CHANGE: 05/11/21

DIMENSIONS ARE SUBJECT TO MANUFACTURERS TOLERANCES AND CHANGE WITHOUT NOTICE. WE CAN ASSUME NO RESPONSIBILITY FOR USE OF SUPERSEDED OR VOID DATA.



MICHIGAN CITY, INDIANA

NOTES