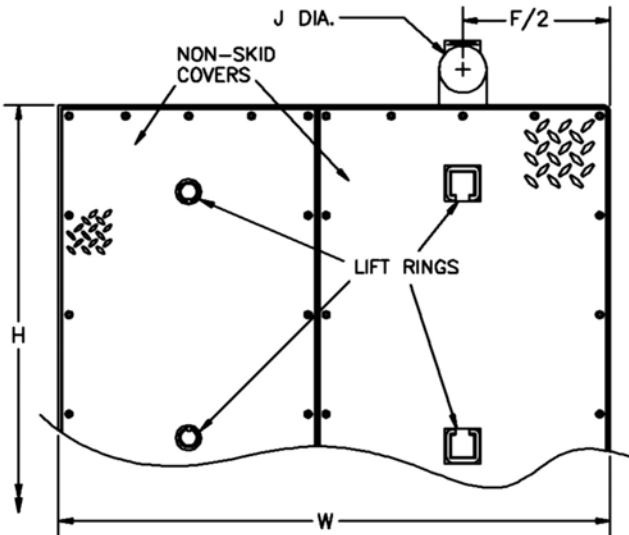


SPECIFICATION:

JOSAM 60610A-EST-60 STEEL OIL INTERCEPTOR, FLUSH-WITH-FLOOR TYPE WITH OIL STORAGE TANK, THREADED CONNECTIONS, FLAT BOTTOM, VISIBLE DOUBLE WALL TRAP, SEDIMENT BUCKET, GASKETED COVER, ACID RESISTANT COATING (INSIDE & OUT), CHECK VALVE, FLOW CONTROL FITTING** AND ANCHOR FLANGE.

**OIL INTERCEPTOR
W/ INTEGRAL OIL STORAGE TANK**

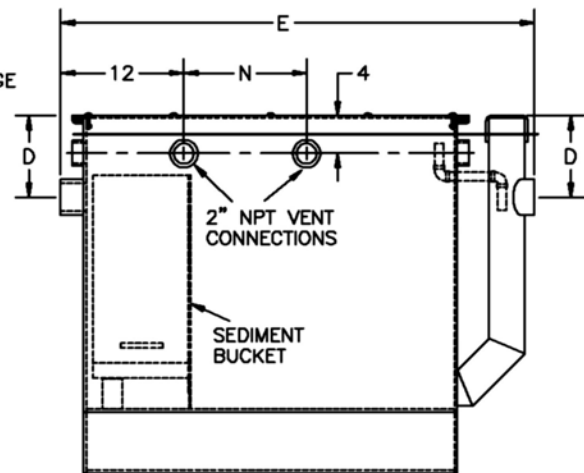
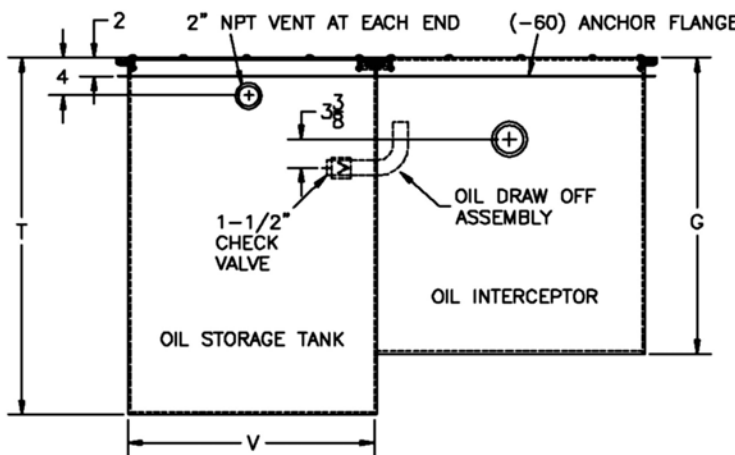
SERIES 60610A-EST-60



OPTIONS

- 60 ANCHOR FLANGE
- 19 RECLAIM TANK ALARM
- EXT EXTENSION (SPECIFY 'D' DIM)
(MINIMUM 'D' DIM = 8")

- THE (-60) ANCHOR FLANGE OPTION IS NOT INTENDED TO HANG OR SUPPORT WEIGHT OF INTERCEPTOR
- FLANGE IS INTENDED TO ANCHOR AND STABILIZE UNIT IN CONCRETE



TYPE	FLOW RATE	TANK (GAL.)	PIPE SIZE	D	E	F	G	H	J	N	T	V	W	WGT (LBS)	** FLOW CONTROL
60611A-EST-60	75	100	3	8	46	31	29	41	4	12	37	24	59	1200	60714
60612A-EST-60	100	250	4	8	54	35	31	47	5	14	48	35	70	1500	60714
60613A-EST-60	150	250	4	10	60	39	37	53	5	16	45	35	74	2000	60714
* 60614A-EST-60	200	250	5	15	67	42	49	54	6	18	48	35	77	2400	60715
* 60615A-EST-60	250	500	5	15	72	46	51	63	6	20	60	45	91	3000	60715
* 60616A-EST-60	350	500	6	15	80	52	55	71	6	23	56	45	97	3800	60716
* 60617A-EST-60	500	500	6	26	91	59	70	83	6	27	66	45	104	5200	60716

* FURNISHED WITH 2 PIECE COVER

** FLOW CONTROL INCLUDED AS STANDARD (NOT SHOWN)

DRAWING No. 01/02/08

JOSAM COMPANY
MICHIGAN CITY, INDIANA

NOTES: