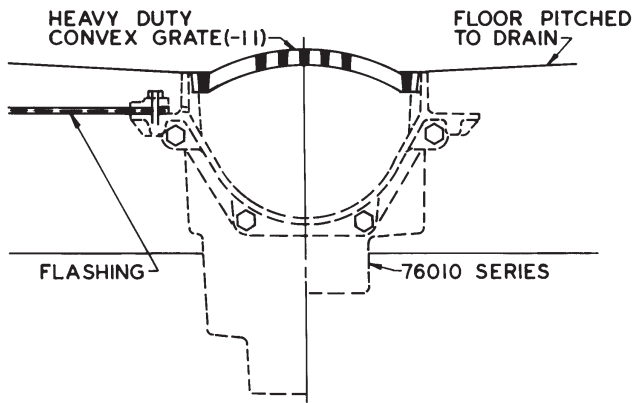
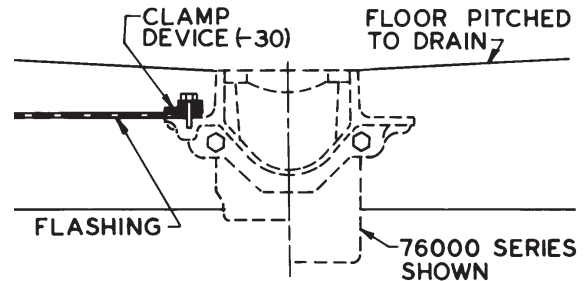


TRENCH DRAINS

Options



(-11) OPTION, HEAVY-DUTY CONVEX GRATE
allows drainage through openings in top of grate even in the event of perimeter blockages by leaves or debris.



(-30) OPTION, FLASHING CLAMP DEVICE
assures the positive bond of the membrane between the flange and clamp ring.

How To Order

Unless optional materials are specified, standard material shown in Specification will be provided.
Last digit indicates outlet size.

EXAMPLE: Series No. 76000

Type No. 76004

76004 -X -1 -30

Outlet Size _____

Outlet Type, Inside Caulk Outlet _____

Optional Material, Satin Finish Nikaloy Top _____

Option, Flashing Clamp Device _____

76000 & 76010 Series Ordering Information

1. Specify type number and options as above.
2. Specify total quantity of outlets and total quantity of extensions.
3. Assembly is recommended when nikaloy and bronze tops are ordered.
When assembly is required, indicate layout of outlets and extensions, using "O" for outlet and "X" for extensions.

EXAMPLE: For center outlet and two extensions, specify X-O-X.

Trench Grate Ordering Information

76300, 76500 and 76700 Series Grates are used in an END-TO-END configuration.

76400, 76600 and 76800 Series Frame & Grate Assemblies use 76300, 76500 and 76700 Series Grates respectively in a SIDE-BY-SIDE configuration.